



IMPACT REPORT 2016

CAMBRIDGESHIRE
COMMUNITY
FOUNDATION



- LOOKED AFTER CHILDREN - £32,779
- CHILDREN AND YOUNG PEOPLE WITH DISABILITIES - £78,058
- YOUNG CARERS - £15,092
- CHILDREN IMPACTED BY FAMILY CRISIS - £19,671
- VICTIMS OF CRIME - £20,780
- HOMELESS PEOPLE - £66,950
- ISOLATED OLDER PEOPLE - £22,796
- ADULTS WITH MENTAL HEALTH ISSUES - £24,400
- ADULTS WITH PHYSICAL HEALTH PROBLEMS - £95,474
- PEOPLE IN FINANCIAL DIFFICULTY - £26,237
- YOUNG PEOPLE AT RISK OF INVOLVEMENT IN ANTI-SOCIAL BEHAVIOUR - £19,659
- THE LONG-TERM UNEMPLOYED - £37,931
- NEET (NOT IN EDUCATION, EMPLOYMENT OR TRAINING) YOUNG PEOPLE - £38,780
- ETHNIC MINORITIES FACING BARRIERS TO EMPLOYMENT - £79,816
- ADULTS FACING BARRIERS TO EDUCATION - £140,500
- CHILDREN IN RURAL AREAS - £66,030
- CHILDREN FROM DISADVANTAGED FAMILIES - £40,898



TOTAL GRANTS AWARDED IN 2015

£1,702,227

CAMBRIDGESHIRE COMMUNITY FOUNDATION (CCF)

has a vision of “effective giving, thriving communities and enriched lives”. CCF is part of a worldwide charitable network of community foundations. We aim to build stronger communities in Cambridgeshire and Peterborough by making it easier for donors to support projects that address the real needs that exist in our communities. For more information on the charitable funds which we hold, visit our website -

www.cambscf.org.uk

Our 2016 Impact Report provides details of grants awarded in 2015 to community projects, from a range of the charitable funds we hold, through our two funding streams IMPROVING LIVES and IMPROVING COMMUNITIES. For more information about IMPROVING COMMUNITIES see the back cover.

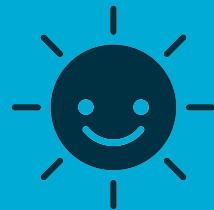
IMPROVING LIVES - CCF supports projects and initiatives that aim to improve the quality of life for local people who face disadvantage or difficulty. Funding is targeted towards certain beneficiary groups including those featured in this report, starting with Looked After Children.



AS A RESULT OF THE FUNDED PROJECT:

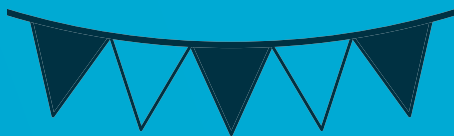
34

YOUNG PEOPLE IN CARE AND THEIR FAMILIES WERE ABLE TO ACCESS SUPPORT SERVICES AND FEEL LESS SOCIALLY EXCLUDED



20

HOME VISITS TO FOSTER CARERS WITH YOUNG PEOPLE WERE MADE AS A RESULT OF REFERRALS



150+ CHILDREN AND YOUNG PEOPLE ACCESSED ADVICE AND SUPPORT FROM THE NATIONAL YOUTH ADVOCACY SERVICE

LOOKED AFTER CHILDREN

“

“Such a good turn out and gets better each year” (BENEFICIARY)

“I moved placements and didn’t get to see anyone for ages, so on the fun day I got to see everyone again.” (BENEFICIARY)

“It is a real highlight of the summer for so many local young carers.” (THIRD PARTY)

”



LOOKED AFTER CHILDREN

BENEFICIARY GROUP

JUST US is an organisation that provides support for any and all looked after children and care leavers within Cambridgeshire.

WHO ARE LOOKED AFTER CHILDREN?

“A child is ‘looked after’ if they are in the care of the local authority for more than 24 hours. A child will stop being ‘looked after’ when they are either adopted, returned home or turn 18. The local authority will continue to support children leaving care at 18 until they reach 21.”

www.nspcc.org.uk - 2016

FUND:
Outlook Fund

FUNDED PROJECT:
Just Us received £2,700 to support the annual fun day where looked after children, care leavers and carers come together to take part in activities, have fun and build new relationships.

- CCF TARGETED OUTCOMES:**
- Increased social interactions, networks and companionship
 - Improved life opportunities
 - Reduced isolation or improved social inclusion



AS A RESULT OF THE FUNDED PROJECT:

8

YOUNG CARERS ENGAGED WITH A COMMUNITY EVENT

3

YOUNG CARERS ARE NOW INVOLVED WITH REGULAR VOLUNTEERING



3

SIMILAR EVENTS HAVE BEEN ORGANISED FOR OTHER COMMUNITY GROUPS ACROSS CAMBRIDGESHIRE BECAUSE OF THE SUCCESS OF THE PROJECT IN RAISING AWARENESS OF YOUNG CARERS



“

“I’ve learnt that there’s more to being a young carer than what people first think.”
(BENEFICIARY)

“I really enjoyed building the lego and making the sticker design.”
(BENEFICIARY)

“What I liked most about the project was just being involved; I would definitely recommend a friend join in with something like this.”
(BENEFICIARY)

”

YOU
CARERS



YOUNG CARERS

BENEFICIARY GROUP

CARERS TRUST CAMBRIDGESHIRE is a registered charity that provides services that respond to the needs of family carers, young carers and the people they support.

WHO ARE YOUNG CARERS?

“A survey carried out in 2010 by the BBC estimated that there are 700,000 young carers in the UK. Young carers are children and young people who often take on practical and/or emotional caring responsibilities that would normally be expected of an adult.”

www.carers.org - 2016

FUND:

Local Youth Social Action Fund

FUNDED PROJECT:

Carers Trust Cambridgeshire received £4,271 to support 8 young carers to run a community 'Think Young Carer' campaign over a 6 month period raising awareness for the work that young carers do.

CCF TARGETED OUTCOMES:

- Improve community cohesion
- Improve access to volunteering
- Reduced isolation or improved social inclusion



AS A RESULT OF
THE FUNDED PROJECT:

110

STUDENTS IMPROVED THEIR
TEAM-WORKING AND SOCIAL
INTERACTION



1

STUDENT WITH SPECIAL
EDUCATIONAL NEEDS AND
DISABILITIES USED THE SHOW
TO WORK TOWARDS THEIR
SILVER ARTS AWARD

145

STUDENT PERFORMERS
DEMONSTRATED GREATER
LEVELS OF SELF-ESTEEM



5

YOUNG PEOPLE WITH SPECIAL
EDUCATIONAL NEEDS AND
DISABILITIES FROM A LOCAL
CARE ORGANISATION WERE
INSPIRED TO JOIN BEDAZZLE
AFTER WATCHING THE SHOW



“Wow! What a show last night. It was fantastic and a real testament to all the hard work everyone does at Bedazzle.”
(SPECTATOR)

“It was so lovely to see L and all the students thoroughly enjoying themselves. L looked so relaxed and happy. It was a humbling experience!”
(SPECTATOR)

“I now feel confident in things that I do. At first I was nervous on stage, but now I am much more relaxed ...I feel I can do more than I ever thought possible and I have tried so many new and different skills.”
(STUDENT WITH SEND)



CHILDREN AND YOUNG PEOPLE WITH DISABILITIES

BENEFICIARY GROUP

BEDAZZLE PROJECTS is a registered charity which brings the performing arts to individuals that might not otherwise experience it, such as those with SEND.

WHAT ARE SPECIAL EDUCATIONAL NEEDS AND DISABILITIES (SEND)?

“Special educational needs and disabilities (SEND) can affect a child or young person’s ability to learn. They can affect their: behaviour or ability to socialise; reading and writing; ability to understand things; concentration levels; physical ability.”

www.gov.uk/children-with-special-educational-needs/overview - 2016

FUND:

ARM Community Fund

FUNDED PROJECT:

Bedazzle Projects received £2,000 to support the annual ‘Imagine’ variety show where students of all abilities, predominantly young people with SEND, showcase their talents.

CCF TARGETED OUTCOMES:

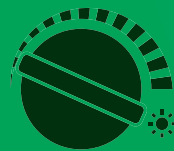
- Improved educational attainment
- Improved life opportunities
- Reduced isolation or improved social inclusion

CHILDREN AND
YOUNG PEOPLE WITH
DISABILITIES

AS A RESULT OF THE FUNDED PROJECT:

24

INDIVIDUALS GAINED ACCESS TO BASIC NEEDS (FOOD, WARMTH, SHELTER)



12

INDIVIDUALS HAVE BEEN HELPED TOWARDS MORE INDEPENDENT LIVING



12

OF THE BENEFICIARIES GAVE UP THEIR TIME TO HELP THE SHELTER AND IN DOING SO GAINED A SENSE OF SELF-WORTH AND CONFIDENCE

17

INDIVIDUALS ACCESSED SUPPORT AND 12 WERE SIGNPOSTED TO FURTHER SUPPORT FROM OTHER AGENCIES

HOME PEC

“

“I came into Jimmy's originally just for a night to have some food and get out of the cold. I hadn't realised that staff would then be helping me to move on to somewhere better... It made me feel good that someone wanted to do something for me.”

(BENEFICIARY)

“My weekly drop-in sessions at Jimmy's mean that I can meet people at that crucial time when homelessness first strikes and make sure that they don't quickly become entrenched in a homeless lifestyle.”

(CHS OUTREACH)



HOMELESS PEOPLE

BENEFICIARY GROUP

JIMMY'S CAMBRIDGE is a registered charity which aims to relieve poverty amongst people in the Cambridge City area who are homeless or sleeping rough.

HOW IS HOMELESSNESS DEFINED?

“You are considered homeless if you have no home in the UK or anywhere else in the world available for you to occupy. You don't have to be sleeping on the streets to be considered homeless.”

www.shelter.org.uk - 2016

FUND:

Warm Homes Healthy People Fund

FUNDED PROJECT:

Jimmy's Cambridge received £2,000 to provide bedding, support, help with resettlement and connection with homelessness specialists for homeless individuals in Cambridge City.

CCF TARGETED OUTCOMES:

- Increased levels of employment or volunteering
- More independent living
- Reduced isolation or improved social inclusion



AS A RESULT OF THE FUNDED PROJECT:

44

ELDERLY RESIDENTS SAID THEY FELT LESS SOCIALLY EXCLUDED



25

PARTICIPANTS FELT THE CLUB HAD HELPED TO IMPROVE COHESION AMONGST THE LOCAL COMMUNITY



45

OLDER PEOPLE'S SHORT-TERM MENTAL AND PHYSICAL HEALTH WAS IMPROVED THROUGH A RANGE OF ACTIVITIES

20

GUESTS STATED THAT THEY HAD BEEN ENCOURAGED TO MAKE NEW FRIENDS

“

“A number of my patients attend and let me know how valuable they find it; offering many and varied activities, and plenty of lively company during the sessions.”
(NURSE)

“Happy, it really helped my self-confidence and I'm pleased I joined in.”
(BENEFICIARY)

“Thoroughly satisfied and grateful... looking forward to next year already!”
(BENEFICIARY)

”



ISOLATED OLDER PEOPLE

BENEFICIARY GROUP

PAPWORTH TEAM MINISTRY aim to support and provide social opportunities for residents in parishes across South Cambridgeshire.

WHAT IS THE DIFFERENCE BETWEEN ISOLATION AND LONELINESS?

“Isolation refers to separation from social or familiar contact, community involvement, or access to services. Loneliness, by contrast, can be understood as an individual's personal, subjective sense of lacking these things to the extent that they are wanted or needed.”

www.ageuk.org.uk - 2015

FUND:

Hubert Julian Grassroots Endowment Fund

FUNDED PROJECT:

Papworth Team Ministry received £1,500 to support a summer holiday club for senior citizens across 13 rural South Cambridgeshire villages.

CCF TARGETED OUTCOMES:

- Reduced isolation
- Improved long-term health and fitness
- Improved community cohesion and interactions

ISOLATED OLDER PEOPLE



AS A RESULT OF THE FUNDED PROJECT:

53

ADULTS WITH MENTAL ILLNESS GIVEN SUPPORT



53

ADULTS NOW REQUIRE LESS NEED OF ACUTE SERVICES AND HAVE REGAINED A SENSE OF CONTROL OVER THEIR LIVES



>60%

OF BENEFICIARIES REPORTED IMPROVED LEVELS OF STABILITY IN THEIR LIVES

>50%

OF PARTICIPANTS REPORTED AN IMPROVEMENT IN THEIR LIFE SKILLS

“

“Red2Green bridges the gap where there is nothing else in Ely.”
(NURSE)

“(Red2Green) keeps me safe socially, helps me through ups and downs and prevents isolation.”
(BENEFICIARY)

“(Red2Green) makes me feel like a worthy part of the community and have a purpose. A place to go where I don't feel judged, there are people to talk to about my problems and it boosts my confidence and self-esteem.”
(BENEFICIARY)

”

ADULTS WITH HEALTH ISSUES



ADULTS WITH HEALTH ISSUES OR DISABILITIES

BENEFICIARY GROUP

RED2GREEN is a registered charity which provides innovative, personalised and achievable opportunities in a safe environment for people with disabilities and disadvantages in and around Cambridgeshire.

WHAT IS A MENTAL HEALTH PROBLEM?

“Mental health problems can affect the way you think, feel and behave. Mental health problems affect around one in four people in Britain, and range from common mental health problems, such as depression and anxiety, to more rare problems such as schizophrenia and bipolar disorder.”

www.mind.org.uk - 2016

FUND:

Ridgeons Family Charity Fund

FUNDED PROJECT:

Red2Green received £5,000 to provide mentally ill residents across Cambridgeshire with the support and structure they need to reduce their reliance on acute services and provide them with the opportunity to re-build their lives.

CCF TARGETED OUTCOMES:

- More independent living
- Improved long-term health and fitness
- Reduced isolation or improved social inclusion



Needs an out
1st time
Needs hel
Reassura

AS A RESULT OF
THE FUNDED PROJECT:

4

OF THE FAMILIES INVOLVED
RECORDED A DECREASE IN THE
VIOLENT BEHAVIOUR OF THEIR
CHILDREN



11

CHILDREN FOUND THEIR
PARENTS WERE BETTER ABLE
TO UNDERSTAND AND REACT
TO THEIR EMOTIONAL NEEDS



53
PARENTS REPORTED IMPROVED
SELF-ESTEEM AND REDUCED
LEVELS OF ANXIETY & STRESS

“

“I am more mentally
equipped to deal
with things now.”
(PARENT)

“I found the Non-
Violent Resistance
class to be a great
help because it
taught me many
different methods
for handling difficult
situations with my
children.”
(PARENT)

“I have used the
methods I learnt in
class on both my
children throughout
this course and
have found it really
useful.
(PARENT)

”

FAM RELA BREAK



FAMILIES IMPACTED BY RELATIONSHIP BREAKDOWN

BENEFICIARY GROUP

ORMISTON FAMILIES is a registered charity which delivers four core programmes to ensure the best possible outcomes for children, young people and their families across East Anglia.

WHO EXPERIENCES FAMILY BREAKDOWN?

“Stable, healthy families are at the heart of strong societies... Yet tragically, half of all children born today will experience family breakdown by the age of 16; this breakdown is particularly acute in the most disadvantaged communities.”

www.centreforsocialjustice.org.uk - 2016

FUND:

Police and Crime Commissioner Youth Fund for Cambridgeshire

FUNDED PROJECT:

Ormiston Families received £2,000 to deliver a Non-Violent Resistance (NVR) course to parents of children with a history of violent behaviour. The violence and aggression, if unsupported, can often result in both family breakdown and family crisis. The aim of this course is to prevent this from happening.

CCF TARGETED OUTCOMES:

- Reduced antisocial behaviour and crime
- Improved family stability



AS A RESULT OF THE FUNDED PROJECT:

715

INDIVIDUALS REPORTED FEELING SAFER IN THEIR COMMUNITIES

“

“I feel much safer now. Very friendly and informative. Thank you so much, I can sleep better now and feel like a weight has been lifted.”

(BENEFICIARY)

“Thank you so much for the service. It’s an amazing peace of mind for my daughter and me. Steve is quick to visit and very pleasant.”

(BENEFICIARY)

“...it has really helped put some meaning into why I joined the police.”

(POLICE OFFICER)

”

VICTIMS OF DOMESTIC VIOLENCE AND CRIME



VICTIMS OF DOMESTIC VIOLENCE AND CRIME

BENEFICIARY GROUP

CAMBRIDGESHIRE POLICE SHRIEVALTY TRUST (CPST) is a registered charity which aims to reduce crime and fear of crime for older, vulnerable and disabled people across Cambridgeshire and Peterborough, thereby improving their quality of life, increased independence and safety.

WHAT DOES IT MEAN TO BE A VICTIM OF CRIME?

“Everyone reacts differently to experiencing crime. How you react depends on lots of different things – such as the crime itself, the sort of person you are, and the support you have around you.”

www.victimssupport.org.uk - 2016

FUNDS:

Microsoft Research Limited Community Fund, Dulverton Trust Fund, Seymour Charitable Fund and Cheffins Community Fund

FUNDED PROJECT:

CPST received £6,200 towards the salary of two security advisors and a part-time administrator, enabling the organisation to continue to provide home security to elderly victims of crime and victims of domestic abuse and their children.

CCF TARGETED OUTCOMES:

- Promote safer communities
- Reduce crime & anti-social behaviour
- Strengthen organisations through capacity building

316

FREE HOME FIRE SAFETY CHECKS WERE CARRIED OUT FOR ELDERLY VICTIMS OF CRIME



284

VULNERABLE ADULTS WHO FELT AT RISK OF BECOMING A VICTIM WERE GIVEN FREE CRIME PREVENTION ADVICE

115

HOME SECURITY IMPROVEMENTS WERE INSTALLED FREE FOR HIGH RISK DOMESTIC ABUSE VICTIMS WITH 176 CHILDREN IN THEIR HOUSEHOLDS



Cambridgeshire
Community
Foundation

www.cambscf.org.uk

info@cambscf.org.uk

01223 410535



BUILDINGS OF ARCHITECTURAL SIGNIFICANCE - £206,145		COMMUNITY FACILITIES AT SCHOOLS - £41,200
COMMUNITY FACILITIES IN CHURCHES - £66,303		SKATE PARKS - £87,396
COMMUNITY COHESION - £7,600		SPORTS CLUBS - £57,990
OTHER INDOOR COMMUNITY FACILITIES - £65,028		SUSTAINABILITY OF GROUPS - £16,465
OTHER OUTDOOR COMMUNITY FACILITIES - £2,446		THE ENVIRONMENT - £3,200
PLAYGROUNDS - £101,979		VILLAGE HALLS - £151,765
PLAYING FIELDS - £68,859		

IMPROVING COMMUNITIES –

CCF provides funding for projects which develop and strengthen local communities and enrich local life. Funds within this stream include the Amey Community Fund, Dulverton Trust Fund and a growing number of Wind Farm Community Benefit Funds.

Projects supported include restoration of churches, purchase of playground equipment, installation of skate parks, upgrading of village halls and community events.

PROJECTS WHICH HAVE BEEN SUPPORTED INCLUDE:

- Carlton cum Willingham Parish Council refurbished the village's only bus shelter.
- Ellesmere Centre carried out roof repairs and installed solar panels.
- Haslingfield Lawn Tennis Club added an additional third court.
- Whitehill Allotment Society planted fruit trees and bushes to create a communal orchard.
- Landbeach and Milton Baptist Church replaced and restored several of the church's large glass windows.